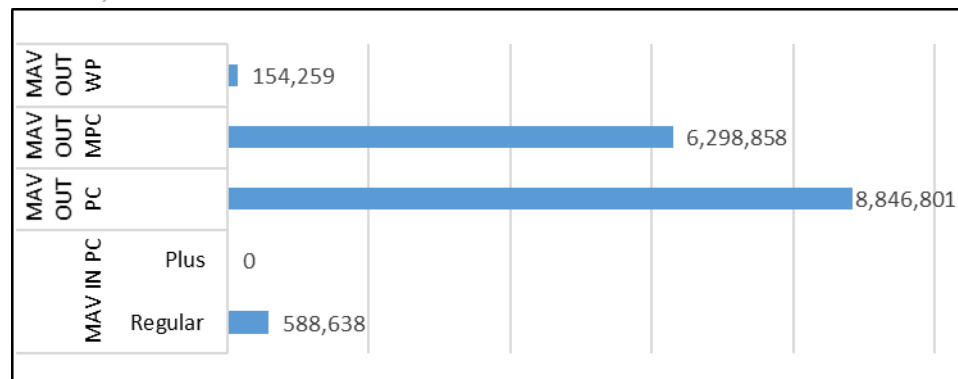


PORK IMPORTATION DATA

FOR THE PERIOD OF SEPT. 25-OCT. 2, 2022

I. IMPORTATION ARRIVAL (KGS)

*Bellies, Cuts



Category	Description	Sept. 26 – Oct. 2, 2022	
MAV IN QUOTA			
Prime Cuts		Regular	Plus
	Bellies	125,427	0
	Pork Cuts	463,211	0
	Subtotal	588,638	0
IN QUOTA Subtotal (Prime Cuts)		588,638	
MAV OUT QUOTA			
Prime Cuts	Bellies	1,589,330	
	Pork Cuts	7,257,470	
OUT QUOTA Subtotal (Prime Cuts)		8,846,801	
PRIME CUTS TOTAL (IN & OUT QUOTA)		9,435,439	
Meat Processing Cuts	Deboned	0	
	Fats	1,603,230	
	Offals	4,207,624	
	Rind/Skin	488,005	
MEAT PROCESSING CUTS TOTAL		6,298,858	
Whole Pork	4-way cut	0	
	6-way cut	154,259	
WHOLE PORK TOTAL		154,259	
GRAND TOTAL (PC, MPC)		15,888,556	

II. SPSIC ISSUED FROM AUGUST 1-31, 2022 AND PROJECTED ARRIVAL (KGS)

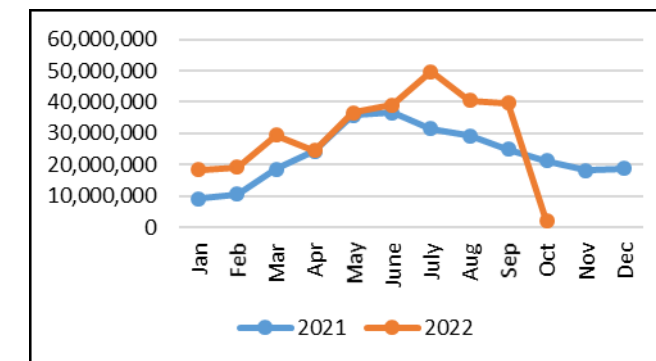
Category	Description	Total	Projected Arrival* (56% Projection Rate)
Carcass	Whole Pork	515,057	288,432
Prime Cuts	Bellies	15,183,540	8,502,782
	Pork Cuts	37,990,393	21,274,620
	PC Subtotal	53,173,933	29,777,403
Meat Processing Cuts	Deboned	7000	3,920
	Fats	8,733,595	4,890,813
	Offals	38,703,428	21,673,920
	Rind/Skin	4,107,000	2,299,920
MPC Subtotal	51,551,023	28,868,573	
PORK TOTAL		105,240,013	58,934,408

*Expected Month of Arrival (Projected): August – November 2022

IV. CIF OF PORK

Description	USD/Kg
	Sept. 26 - Oct. 2, 2022
Pork Bellies	1.85
Pork Cuts	1.47

III. 2021 VS 2022 ARRIVALS IN AND OUT QUOTA (KGS)



Month	2021	2022
Jan	9,182,515	18,386,480
Feb	10,510,010	19,164,482
Mar	18,497,024	29,331,444
Apr	24,313,981	24,489,420
May	35,866,077	36,580,530
June	36,578,995	39,109,537
July	31,503,987	49,683,330
Aug	29,246,238	40,441,821
Sep	24,935,057	47,742,530
Oct	21,189,464	*2,053,321
Nov	18,161,309	
Dec	18,703,067	
TOTAL	279,254,274	**306,982,895

*Prime cuts only

*September 25, 2022 only

**January to September 125 2022

Source: DA Trade System

REPORT ANALYSIS

PORK IMPORTATION ARRIVALS FOR THE PERIOD OF SEPT. 26 – OCT. 2, 2022

The **total volume of pork imports** that arrived this period is **15,889MT**. **Prime Cuts**, which are pork bellies and pork cuts, comprise **59.39%** while **meat processing cuts**, which are deboned, fats, offals and rind/skin, make up **39.64%** of this total volume while **whole pork** consisted **0.97%**. To further classify prime cuts, **in-quota prime cuts** were recorded at **589MT (3.70%)** while **out-quota prime cuts** were accounted **at 8,847MT (55.68%)** out of the total volume.

Delays in arrivals can still be observed as global logistical problems continue to persist. Despite this, Pork importation in the Philippines **has been increasing** in the past months with some fluctuations mainly influenced by offals as it makes up a considerable portion of the shipment as a whole. The increased in the importation of this commodity may have been due to the meat preference of the consumers as offals, specifically pork jowls, are often regarded as the poor man's meat and are used to substitute lean pork in common Filipino dishes such as adobo. Due to the low purchasing power, its affordability makes it an excellent alternative to prime cuts. On the other hand, prime cuts alone show a stable rise in arrivals since the start of the year.

PORK PRIME CUTS IMPORTATION ARRIVALS FOR THE PERIOD OF SEPT. 26- OCT. 2, 2022

From **Sept. 26 – Oct. 2, 2022**, the volume of pork prime cuts importation that arrived in the country is **7,435MT**.

CIF OF PRIME CUTS FOR THE PERIOD OF SEPT. 26 – OCT. 5, 2022

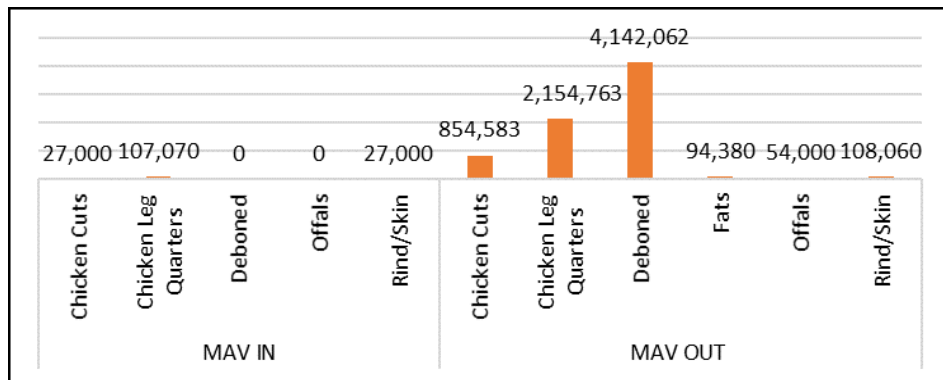
The CIF for **pork bellies** from **Sept. 26 – Oct. 2, 2022** is **1.85 USD/kg**. On the other hand, **pork cuts** have a CIF of **1.47 USD/kg**.

Please note that CIF are usually dependent on the status of the economy and agricultural sector of the source country.

CHICKEN IMPORTATION DATA

FOR THE PERIOD OF SEPT. 26 - OCT. 2, 2022

I. IMPORTATION ARRIVAL (KGS)



Category	Description	Sept. 26- Oct.2 , 2022
MAV IN QUOTA		
Choice Cuts	Chicken Cuts	27,000
	Chicken Leg Quarters	107,070
IN QUOTA Subtotal (Choice Cuts)		134,070
Meat Processing Cuts	Deboned	0
	Fats	0
	Offals	0
	Rind/Skin	27,000
IN QUOTA Subtotal (Meat Processing Cuts)		27,000
MAV in TOTAL		161,070
MAV OUT QUOTA		
Choice Cuts	Chicken Cuts	854,583
	Chicken Leg Quarters	2,154,763
OUT QUOTA Subtotal (Choice Cuts)		3,009,346
Meat Processing Cuts	Deboned	4,142,062
	Fats	94,380
	Offals	54,000
	Rind/Skin	108,060
OUT QUOTA Subtotal (Meat Processing Cuts)		4,398,502
MAV out TOTAL		7,407,847
GRAND TOTAL (PC, MPC)		7,568,917

II. SPSIC ISSUED FROM AUGUST 1-31, 2022 (KGS) AND PROJECTED ARRIVAL

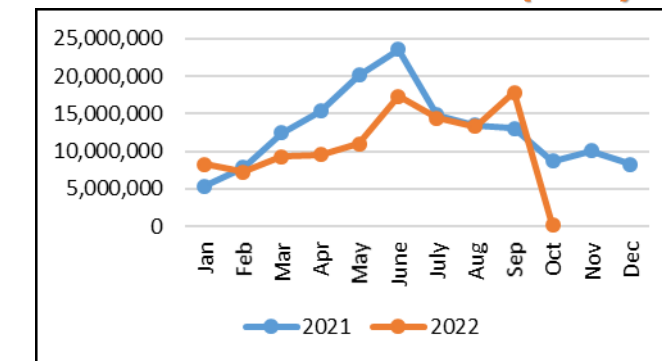
Category	Description	Total	Projected Arrival (57% Projection Rate)
Choice Cuts	Cuts	14,950,936	8,522,034
	CLQ	40,748,450	23,226,617
CC Subtotal		55,699,386	31,748,650
Meat Processing Cuts	Deboned	31,254,072	17,814,821
	Fats	2,011,720	1,146,680
	Offals	720,120	410,468
	Rind/Skin	762,500	434,625
MPC Subtotal		34,748,412	19,806,595
CHICKEN TOTAL		90,447,799	51,555,245

**Expected Month of Arrival (Projected): August – November 2022*

IV. CIF OF CHICKEN

Description	USD/Kg
Sept. 26 – Oct. 2, 2022	
Chicken Cuts	1.28
CLQ	1.14

III. 2021 VS 2022 ARRIVALS IN AND OUT QUOTA (KGS)



Month	2021	2022
Jan	5,377,536	8,287,565
Feb	7,815,273	7,235,470
Mar	12,419,460	9,163,066
Apr	15,386,082	9,539,147
May	20,120,989	11,028,166
June	23,501,586	17,330,266
July	14,816,888	14,401,034
Aug	13,459,178	13,260,188
Sep	13,038,808	17,796,623
Oct	8,725,273	*166,935
Nov	10,065,184	
Dec	8,281,151	
TOTAL	153,007,409	**108,208,460

*Choice Cuts only
*October 2, 2022
**January to October 2, 2022

REPORT ANALYSIS

CHICKEN IMPORTATION ARRIVALS FOR THE PERIOD OF SEPT. 26 – OCT. 2, 2022

The **total arrival of chicken imports** for this period is **7,569MT**. **Choice cuts**, which are chicken cuts and chicken leg quarters, comprise **41.53%** while **Chicken Mechanically Deboned Meat (MDM)** makes up most of the total arrival, accounting for **54.72%** while **other meat processing cuts 3.74%** of the arrivals this period. To further classify choice cuts, **in-quota choice cuts** were recorded at **134MT (1.77%)** while **out-quota choice cuts** were accounted at **3,009MT (39.76%)** out of the total volume.

Total volume of chicken import arrivals have decreased in comparison to the previous years due to imposition of embargo on poultry products to several countries as H5N1 High Pathogenicity Avian Influenza persists and further spreads globally. Trade partners such as, Netherland, United States of America and Canada, which are large sources of imported chicken commodities, have been issued temporary restriction on poultry trade in the last quarter of 2021 to the first quarter of 2022 thus greatly affecting the figures of arrived commodities in the current year.

However, **imports are expected to increase** in the coming months following the lifting of trade restrictions on Spain, Belgium, USA (Missouri only), and Japan.

The Philippines presently cannot produce its own supply of Chicken MDM due to lack of facilities and materials, and so is heavily reliant on external sources. With the current economic status of the country where the pandemic continues to contribute to low purchasing power of consumers, processed foods such as hotdogs and meatloaves, which uses MDM as its main ingredient, are preferred as an alternative source of protein. Chicken arrivals under MAV importation may have been due to the delays caused by the logistical problems that are persisting up to date.

CHICKEN CHOICE CUTS IMPORTATION ARRIVALS FOR THE PERIOD OF SEPT. 25 – OCT. 2, 2022

From **Sept. 26 – Oct. 2, 2022** the volume of chicken choice cuts importation that arrived in the country is **3,143MT**.

CIF OF CHOICE CUTS FOR THE PERIOD OF SEPT. 26 – OCT. 2, 2022

The CIFs for chicken choice cuts, namely, chicken cuts and chicken leg quarters that arrived from **Sept. 26 – Oct. 2, 2022** are **1.25USD/kg** and **1.14USD/kg** respectively.

Please note that CIF are usually dependent on the status of the economy and agricultural sector of the source country.