



# JAPAN AND PHILIPPINES ONE HEALTH RABIES PROJECT

## Rabies Data Share System (RaDSS)



# RABIES ALERT!

## CASE REPORTED NEAR YOUR AREA

BARANGAY:

MUNICIPALITY:

DATE OF DEATH:

LABORATORY TEST RESULT **POSITIVE FOR RABIES**

DATE TESTED:

SPECIES:

BREED:

SPECIAL APPEARANCE:

- CLINICAL SIGNS OBSERVED:
- EATING INANIMATE OBJECTS
  - RESTLESSNESS
  - AGGRESSION
  - EXCESSIVE SALIVATION
  - UNPROVOKED BITE
  - PARALYSIS
  - ABNORMAL VOCALIZATION

### IPAGBIGAY ALAM ANG MGA SUMUSUNOD:



Mga hayop na nagpapakita ng sintomas ng Rabies



Kahina-hinala o biglaang pagkamatay ng isang hayop



Ang hayop na nakakagat ng isa o higit pang biktima (tao o hayop) sa isang araw

### KUNG NAKAGAT O NAKALMOT NG HAYOP:

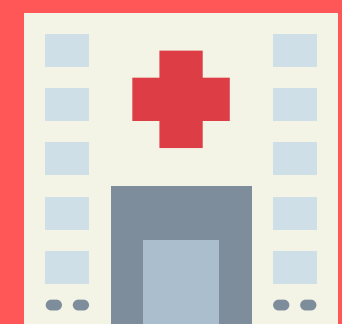
Hugasan at sabunin ng mabuti ang sugat sa loob ng 15 minuto



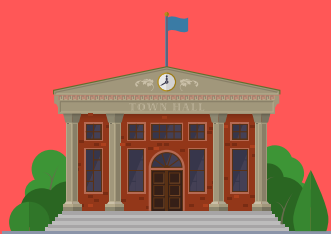
Maglagay ng tincture of iodine sa sugat



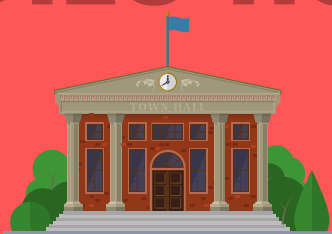
Magpa-konsulta agad sa pinakamalapit na Animal Bite Treatment Center.



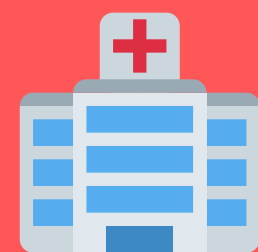
### RABIES HOTLINE:



MUNICIPAL AGRICULTURE OFFICE  
CONTACT NO.:



MUNICIPAL HEALTH OFFICE  
CONTACT NO.:



ANIMAL BITE TREATMENT CENTER  
CONTACT NO.:

