



Republic of the Philippines
OFFICE OF THE SECRETARY
Elliptical Road, Diliman
1100 Quezon City

ADMINISTRATIVE ORDER

No. 43
Series of 2020

SUBJECT : IMPLEMENTING GUIDELINES FOR THE INTENSIFIED AFRICAN SWINE FEVER DISEASE CONTROL PROGRAM OF THE DEPARTMENT OF AGRICULTURE

WHEREAS, in the exercise of the mandate of Section 7, Chapter 2, Book IV of Executive Order No. 292 entitled: Instituting the Administrative Code of 1987, the Secretary of the Department is empowered to promulgate rules and regulations necessary to carry out department objectives, policies, functions, plans, programs and projects; and issue administrative orders necessary for the efficient administration of the offices under the Secretary and for proper execution of the laws relative thereto;

WHEREAS, Department of Agriculture (DA) issued an Administrative Order (AO) No. 03, Series of 2018, amending AO No. 1, Series of 2012, on Declaring the List of Notifiable Diseases states that any unusual clustering of similar symptoms or syndromes or more than the perceived mortalities and morbidities that are yet unknown in origin shall be considered notifiable to consider emerging and re-emerging diseases;

WHEREAS, early reporting of animal-borne disease is vital for an efficient and well-coordinated response and immediate implementation of control measures;

WHEREAS, African Swine Fever (ASF) continues to affect the swine production sector of the Philippines with no vaccine and no known cure to date;

WHEREAS, as of 11 December 2020, the ASF virus has affected a total of 11 regions, 34 provinces, 399 cities/municipalities and 2,081 barangays with a cumulative total of 424, 988 killed and disposed animals.

WHEREAS, since the first reported ASF outbreak in August 2019, a great number of backyard and commercial farms have ceased or reduced production as a consequence of stamping procedures by the government or fear of possible infection which has led to substantial economic losses.

*A food-secure and resilient Philippines
with prosperous farmers and fisherfolk*



ARTICLE 1
TITLE

1. The title of this AO shall be the '***Implementing Guidelines for the Intensified ASF Disease Control Program of the Department of Agriculture***'.

ARTICLE 2
SCOPE

2. This order applies to the overall intensified disease response of the Government against ASF, including but is not limited to the Disease Investigation, Disease Confirmation, Disease Response, Animal Indemnification, Recovery and Disease Zoning, and the different responsibilities of DA agencies, other government agencies, organizations, and private stakeholders.

ARTICLE 3
OBJECTIVES

3. The order is aimed towards the following:
 - 3.1. Immediate control and cessation of the spread of ASF in affected regions;
 - 3.2. Protect ASF-free areas from incursion, particularly in the Visayas area;
 - 3.3. Move towards the elimination of ASF from the Philippines;
 - 3.4. Facilitate the Disease Response of the Government against ASF;
 - 3.5. Provide structure and clear line of delineation of government institutions on the response against ASF; and
 - 3.6. Address cross cutting issues arising from the occurrence of ASF in areas.

ARTICLE 4
DEFINITIONS

4. The following definitions shall be used as guidance for this order:
 - 4.1. **Animal Disease Diagnostic Reference Laboratory (ADDRL)** is the national reference laboratory under the Bureau of Animal Industry that provides services in support to animal health and production, regulatory, research and surveillance in the whole country.
 - 4.2. **African Swine Fever (ASF)** is a severe viral disease that affects all breeds of domestic and wild pigs in the country and has already caused grave production and economic losses in Luzon and some parts of Mindanao.
 - 4.3. **Animal Health and Welfare Division (AHWD)** is a division of BAI mandated to develop and implement programs for the prevention, control and eradication of priority animal diseases and zoonoses and

develop and implement surveillance systems for the early detection and warning of local and foreign animal diseases.

- 4.4. **Bureau of Animal Industry (BAI)** is the primary agency mandated to control animal diseases in the country.
- 4.5. **Contingency Plan** outlines the needed plans and procedures in the event of an incursion of the disease.
- 4.6. **Department of Agriculture (DA)** is the part of the Executive Branch of the Philippine government mandated to improve, upgrade and regulate the agricultural sector.
- 4.7. **Department of Agriculture Regional Field Offices (DA RFOs)** is the regional branch of the DA that facilitate and supervise the formulation and execution of the policies, plans and programs of the department in the regions.
- 4.8. **Emergency Preparedness Plan** outlines the needed plans and procedures to do before an outbreak occurs.
- 4.9. **Local Government Units (LGU)** is an administrative and political government unit subsidiary to the national government which could itself consist of sub-units as in the case of a province or a municipality.
- 4.10. **National Meat Inspection Service (NMIS)** is a specialized regulatory service attached to the Department of Agriculture, which is the sole controlling authority on all matters pertaining to meat inspection and meat hygiene and subject to laws and guidelines, including promotion of the livestock and meat industry.
- 4.11. **National Veterinary Quarantine Services Division (NVQSD)** is a division of BAI that is mandated to regulate local movement and facilitate importation of live animals, meat and meat-products.
- 4.12. **Operations Manual** is a document with a comprehensive set of instructions, or Standard Operating Procedures, to guide disease responders and field staff on the conduct of disease outbreak activities.
- 4.13. **Recovery Plan** details the actions needed to be conducted for the safe recovery or restoration of normal activities in areas with confirmed disease outbreak.
- 4.14. **Regional Animal Disease Diagnostic Laboratory (RADDL)** is a government laboratory under the DA Regional Field Office that provides services in support to animal health and production, regulatory, research and surveillance in the region.
- 4.15. **Regional Technical Operation Center, NMIS** is the regional office of the NMIS which oversees all regulatory functions within their respective jurisdictions.
- 4.16. **Regional Veterinary Quarantine Office (RVQO)** is the regional counterpart of the NVQSD that regulates movement of live animals, meat and meat-products in the regional level.
- 4.17. **World Organisation for Animal Health**, formerly the *Office International des Epizooties* (OIE) is an intergovernmental organization with a mandate to improve animal health and welfare worldwide.



ARTICLE 5
STRUCTURE AND COMPOSITION

5. The administration on the implementation of this order, organogram represented in Annex A attached herewith, shall be composed of the following:

5.1. DA ASF Crisis Management Team

- 5.1.1. The DA ASF Crisis Management Team (ASF-CMT) shall be established and composed of the following officials as designated by the Secretary:

- 5.1.1.1. Undersecretary for Operations as Chairperson;
- 5.1.1.2. Undersecretary for Livestock as Alternate Chairperson;
- 5.1.1.3. BAI Director;
- 5.1.1.4. NMIS Executive Director;
- 5.1.1.5. DA Financial and Management Service Director;
- 5.1.1.6. DA Agriculture and Fisheries Information Division Director; and
- 5.1.1.7. Private Sector Representatives as invited non-permanent members.

- 5.1.2. The National ASF Task Force shall serve as the Secretariat of the Team.

- 5.1.3. The ASF-CMT shall have the following tasks:

- 5.1.3.1. Oversee the implementation of the National ASF Disease Control Program;
- 5.1.3.2. Provide guidance in the development of Policies and Guidelines on ASF control;
- 5.1.3.3. Provide guidance and directions in the development and implementation of the National ASF Control program;
- 5.1.3.4. Meet monthly, or as needed, to assess the overall implementation of the National ASF Disease Control program; and
- 5.1.3.5. Provide recommendations to the DA Secretary to support decision making processes and development of policies relevant to the control of ASF.
- 5.1.3.6. Approve policies prepared by the NATF.

5.2. ASF Expert Panel

- 5.2.1. The DA ASF Expert Panel shall be established and composed of the following technical expert members:

- 5.2.1.1. BAI Director as Chairperson;
- 5.2.1.2. Relevant Government Agencies;
- 5.2.1.3. National Advisory Committee on Animal Disease Control and Emergency (NACADCE);
- 5.2.1.4. Philippine College of Swine Practitioners (PCSP);



- 5.2.1.5. Private stakeholders; and
- 5.2.1.6. Academe representatives.
- 5.2.2. The National ASF Task Force shall serve as the Secretariat of the Panel.
- 5.2.3. The DA ASF Expert Panel shall have the following tasks:
 - 5.2.3.1. Collate and assess new knowledge and technologies on ASF locally and internationally;
 - 5.2.3.2. Assess the ASF Disease Control program on its scientific merits; and
 - 5.2.3.3. Provide technical recommendations to the DA Secretary, the ASF-CMT, and the National ASF Task Force.

5.3. National ASF Task Force

- 5.3.1. The National ASF Task Force (NATF) shall be established and composed of the following officials:
 - 5.3.1.1. Program Director;
 - 5.3.1.2. Assistant Program Director for Operations and Logistics;
 - 5.3.1.3. Assistant Program Director for Planning and Finance;
 - 5.3.1.4. Coordinator for Laboratory Testing;
 - 5.3.1.5. Coordinator for Slaughterhouse Operations;
 - 5.3.1.6. Coordinator for Disease Surveillance and Monitoring;
 - 5.3.1.7. Coordinator for Movement Management and Quarantine;
 - 5.3.1.8. Coordinator for Information, Education and Communication (IEC); and
 - 5.3.1.9. Designated administrative and technical staff.
- 5.3.2. The NATF is previously the BAI ASF Task Force and shall inherit the duties and responsibilities previously attached to the latter.
- 5.3.3. The NATF shall have the following tasks:
 - 5.3.3.1. Prepare, finalize, assess and revise the plans and protocols for the ASF Disease Control Program, including but not limited to the following:
 - 5.3.3.1.1. Emergency Preparedness Plan;
 - 5.3.3.1.2. Contingency Plan,
 - 5.3.3.1.3. Operation Plan,
 - 5.3.3.1.4. Eradication Plan and
 - 5.3.3.1.5. Recovery Plan.
 - 5.3.3.2. Draft, review and revise policies for the ASF Disease Control Program, including but not limited to the following:
 - 5.3.3.2.1. Zoning Guidelines;
 - 5.3.3.2.2. General Template for LGU issuances;

- 5.3.3.2.3. Indemnification and Compensation Guidelines; and
- 5.3.3.2.4. Accreditation of various entities in relation to ASF Disease Control Program such as third party inspectors, third party laboratories, accreditation of test kits, among others.
- 5.3.3.3. Coordination of all operations related to ASF control, in particular:
 - 5.3.3.3.1. Liaise with all relevant offices, such as but not limited to National Government Agencies (NGAs), LGUs, DARFOs, and private stakeholders which may assist in the development and implementation of the ASF Disease Control Program in the country;
 - 5.3.3.3.2. Coordinate and liaise with the ASF-CMT, ASF Expert Panel, Cluster, Regional, Provincial, City and Municipal ASF Task Force;
 - 5.3.3.3.3. Provide technical guidance to all relevant stakeholders on the planning and conduct of ASF disease response activities; and
 - 5.3.3.3.4. Coordinate the disease investigation, disease confirmation, animal depopulation, animal indemnification and recovery efforts of all relevant stakeholders.
- 5.3.3.4. Develop relevant strategies for the ASF Disease Control Program;
- 5.3.3.5. Develop training and simulation exercises for responders;
- 5.3.3.6. Attend, participate and facilitate meetings, workshops and fora on ASF;
- 5.3.3.7. Manage an epidemiological database on ASF and prepare reports in coordination with relevant national agencies and international organizations;
- 5.3.3.8. Regularly update the ASF-CMT and the Secretary on the ASF Disease Control Program;
- 5.3.3.9. Function as the Secretariat of the ASF Expert Panel and the ASF-CMT including the calling of meetings, coordination and minutes;
- 5.3.3.10. Provide recommendations to the ASF-CMT to support decision-making processes and development of policies relevant to the control and prevention of ASF.
- 5.3.3.11. Review and endorse all requests, appeals, disputes and complaints on the ASF Disease Control Program to the ASF-CMT;
- 5.3.3.12. Manage the ASF operational fund; and
- 5.3.3.13. Ensure the effective implementation of IEC activities.



5.4. Cluster ASF Task Force

- 5.4.1. There shall be four (4) established Cluster ASF Task Force (CATF) for North Luzon, South Luzon, Visayas and Mindanao:
 - 5.4.1.1. The North Luzon CATF shall supervise the ASF Response in Region CAR, I, II, and III;
 - 5.4.1.2. The South Luzon CATF shall supervise the ASF Response in Region NCR, IVA, IVB, and V;
 - 5.4.1.3. The Visayas CATF shall supervise the ASF Response in Region VI, VII, and VIII; and
 - 5.4.1.4. The Mindanao CATF shall supervise the ASF Response in Region IX, X, XI, XII, XIII and BARMM.
- 5.4.2. The Secretary shall designate technical and administrative personnel to compose the different CATF with the following general structure:
 - 5.4.2.1. Cluster Program Director;
 - 5.4.2.2. BAI representatives;
 - 5.4.2.3. NMIS representatives; and
 - 5.4.2.4. Administrative and support staff.
- 5.4.3. The CATF shall have the following tasks:
 - 5.4.3.1. Coordinate with the NATF on the ASF Disease Control Program implementation within their cluster;
 - 5.4.3.2. Create issuances and institute ASF disease response in their cluster such as but not limited to cluster-wide animal movement guidelines;
 - 5.4.3.3. Call for a coordinators meeting for all RATF within their cluster;
 - 5.4.3.4. Attend, participate and facilitate meetings, workshops and fora on ASF;
 - 5.4.3.5. Monitor the Regional ASF Task Forces within their cluster in the conduct of their ASF disease response activities; and
 - 5.4.3.6. Ensure effective implementation of Information, Education and Communication activities in each cluster.

5.5. Regional ASF Task Force

- 5.5.1. The DARFO's respective Regional Executive Directors (RED) shall designate technical and administrative personnel to compose their respective Regional ASF Task Force (RATF), with the following structure:
 - 5.5.1.1. Focal;
 - 5.5.1.2. Alternate Focal;
 - 5.5.1.3. Designated Administrative, Financial and Technical Members.

- 5.5.1.4. Regional ASF Communications Coordinator (RAFID)
- 5.5.1.5. Representatives of relevant DA agencies (BAI, NMIS) and other relevant government agencies

5.5.2. The Regional ASF Task Force shall have the following tasks:

- 5.5.2.1. Recognize the establishment of Provincial, Municipal and City ASF Task Force and create a registry therefor;
- 5.5.2.2. Coordinate with Provincial, Municipal and City ASF Task force under their jurisdiction in the conduct of ASF disease response activities such as surveillance, disease investigation, animal indemnification, depopulation and recovery;
- 5.5.2.3. Organize IEC campaign to farmers through seminars, trainings and development and distribution of IEC material;
- 5.5.2.4. Consolidate all the depopulation records in the region and furnish a copy to the NATF;
- 5.5.2.5. Maintain an updated registry of swine farms in their area of jurisdiction;
- 5.5.2.6. Establish control measures for ASF in their respective regions;
- 5.5.2.7. Attend, participate and facilitate meetings, workshops and fora on ASF;
- 5.5.2.8. Prepare regular updates on ASF for the ASF-CMT, NATF and CATF; and
- 5.5.2.9. Attend the ASF regional coordinators meeting organized by the CATF and the NATF.

5.6. Provincial ASF Task Force

5.6.1. The RATF shall coordinate with the Provincial Government under their jurisdiction to supervise and recognize the creation of the Provincial ASF Task Forces (PATF).

5.6.2. The basic structure of the PATF shall be as follows:

- 5.6.2.1. Focal, preferably from the Provincial Veterinary Office; and
- 5.6.2.2. City/Municipal Representatives;
- 5.6.2.3. ASF Quick Response Team;
- 5.6.2.4. Communication Coordinator (PIO) and
- 5.6.2.5. Finance

5.6.3. Other agencies may be included in the structure as deemed necessary by the PATF.

5.6.4. The recognized PATF shall be delegated with the following tasks:

- 5.6.4.1. Report to the RATF any ASF suspected cases in their area, conduct disease investigation and sample collection;



- 5.6.4.2. Conduct surveillance activities;
- 5.6.4.3. Draft local issuances and ordinances for the control and prevention of ASF in their province;
- 5.6.4.4. Establish animal control checkpoints in areas and provide strategies to prevent the entry of ASF in their province;
- 5.6.4.5. Implement the control and prevention strategies;
- 5.6.4.6. Establish control measures for swine farms, such as but not limited to the institution of biosecurity officers, clustering of farms, etc., in due coordination with the RATF, CATF, and NATF;
- 5.6.4.7. established by the NATF; and
- 5.6.4.8. Provide the logistic support during the conduct of ASF activities.

5.7. City / Municipal ASF Task Force

- 5.7.1. The RATF shall coordinate with the Local Government of Cities and Municipalities under their jurisdiction to supervise and recognize the creation of the City or Municipal ASF Task Forces (CMATF).
- 5.7.2. Charter cities shall create their own City ASF Task Force and shall directly coordinate with the RATF.
- 5.7.3. The basic structure of the CMATF shall be as follows:
 - 5.7.3.1. Focal, preferably from the City/Municipal Agriculture or Veterinary Office;
 - 5.7.3.2. Barangay Representatives.
- 5.7.4. The recognized CMATF shall be delegated with the following tasks:
 - 5.7.4.1. Coordinate any ASF disease response to the PATF and RATF;
 - 5.7.4.2. Report any ASF suspected cases in their area and conduct disease investigation and sample collection;
 - 5.7.4.3. Conduct surveillance activities;
 - 5.7.4.4. Draft local issuances and ordinances for the control and prevention of ASF in their city or municipalities;
 - 5.7.4.5. Establish animal control checkpoints in areas and provide strategies to prevent the entry of ASF in their city or municipalities;
 - 5.7.4.6. Implement the control and prevention strategies established by the NATF; and
 - 5.7.4.7. Provide the logistic support during the conduct of ASF activities.

ARTICLE 6
GENERAL PROCEDURES

6. The general procedures in the ASF Disease Response of the government are as follows:

6.1. Disease Prevention

- 6.1.1. The CMATF shall head the IEC campaign for ASF in their area of jurisdictions in line with the Regional, Cluster, and National strategy on communication.
- 6.1.2. The clustering of Barangays into one epidemiological unit shall be recognized by the PATF.
- 6.1.3. CSF-ASF shall be applied to the PATF and endorsed to the RATF for their approval.

6.2. Disease Investigation

- 6.2.1. Swine raisers/producers shall report any suspected cases of ASF to their respective local government veterinary or agricultural offices.
- 6.2.2. Local government veterinary or agricultural offices shall report to the PATF any suspected ASF case in their area. PATF shall report the case to the RATF.
- 6.2.3. The veterinary officer who received the suspect case of ASF will immediately take actions to conduct disease investigation of the suspected farm and collect samples for submission to a BAI accredited laboratory with due coordination with the CMATF, PATF, and the RATF.

6.3. Disease Confirmation

- 6.3.1. BAI-accredited ASF testing laboratories shall conduct BAI-recognized confirmatory laboratory tests and report the results to the RATF.
- 6.3.2. The RATF shall receive the laboratory results from BAI-accredited laboratories and shall create a final report on the disease response.
- 6.3.3. The respective RED shall confirm the outbreak and reports to the CATF, NATF, ASF-CMT, and finally to the Secretary.
- 6.3.4. The NATF shall make the official declaration of the outbreak upon the approval of the Secretary.

6.4. Disease Response

- 6.4.1. Upon official declaration of confirmed ASF outbreak, the RATF shall immediately coordinate the disease response to the different PATF, and CMATF.
- 6.4.2. The CMATF, PATF, RATF and CATF shall immediately identify and establish animal quarantine checkpoints.
- 6.4.3. Depopulation shall be immediately conducted, following depopulation protocols of the DA and shall be done as humanely as possible. This shall be under the supervision of the PATF or RATF.
- 6.4.4. Disposal of carcasses and materials that may have come in contact

with ASF infected pigs can be done in accordance with the existing laws and regulations of the Department of Environment and Natural Resources (DENR), as well as local ordinances enacted upon by the respective LGUs affected. This shall be under the supervision of the PATF or the RATF.

- 6.4.5. After depopulation and disposal of all carcasses and infected materials within the affected premises, cleaning and disinfection shall commence immediately and shall be under the supervision and confirmed by the PATF or the RATF.

6.5. Animal Indemnification

- 6.5.1. The process of depopulation and counting of animals depopulated must be under the supervision of the PATF or the RATF.
- 6.5.2. The determination of the recipient and the amount of indemnification shall be determined by relevant DA rules and regulations.
- 6.5.3. The issuance of cash assistance to the farmers shall be directly supervised by the RATF or the PATF.

6.6. Zoning Recognition

- 6.6.1. Zoning categorization of each municipality shall be in accordance with relevant DA rules and regulations.
- 6.6.2. Zoning status of municipalities according to their disease status shall be regularly updated by the NATF through issuance of a Zoning Memorandum.
- 6.6.3. The approval or disapproval of any change in the Zoning categorization shall be reviewed by the NATF and decided by the DA ASF-CMT.

6.7. Recording

- 6.7.1. A registry of the CMATF and PATF shall be created and updated by the RATF.
- 6.7.2. A registry of swine farms shall be created and updated regularly by the RATF.
- 6.7.3. A regular bimonthly report shall be created by the RATF on the status of ASF in their region, which includes but is not limited to: number of confirmed cases, number of culled animals, number of disease investigations conducted, amount of indemnification, among others.
- 6.7.4. Special reports on current outbreaks shall be immediately created and sent by the RATF to the CATF and NATF.
- 6.7.5. The CATF shall collate all reports within their jurisdiction to be submitted to the NATF.
- 6.7.6. The NATF shall collate all CATF reports into an ASF National Report, to be reported to the ASF-CMT, ASF Expert Panel, and to the Secretary

**ARTICLE 7
BUDGET**

7. The Department of Agriculture shall allocate budget for the ASF Disease response as follows:
- 7.1. An amount of Three Hundred Million pesos (Php 300,000,000.00) shall be allocated annually for the implementation of the National ASF Disease Control Program for operational purposes; and
 - 7.2. Indemnification fund shall be charged to the DA-QRF or other available sources of funds.

**ARTICLE 8
COMPLAINT AND APPEAL**

8. Any complaints or appeals in accordance to this order shall be made to the NATF and shall be decided by the DA Secretary.

**ARTICLE 9
SEPARABILITY**

9. In case any provision of this Order is declared contrary to law and/or unconstitutional, other provisions which are not affected thereby shall continue to be enforced and in effect.

**ARTICLE 10
REPEALING CLAUSE**

10. All existing orders, circulars, rules and regulations or parts thereof which are inconsistent with the provisions of this order are hereby repealed or modified accordingly.

**ARTICLE 11
EFFECTIVITY**

11. This Circular shall take effect fifteen (15) days upon its publication in a newspaper of general circulation and filing of three (3) copies thereof to the University of the Philippines Law Center.

Done in the City of Quezon, this 22nd of December, in the year of our Lord, Two Thousand and Twenty.


WILLIAM D. DAR, PhD
Secretary

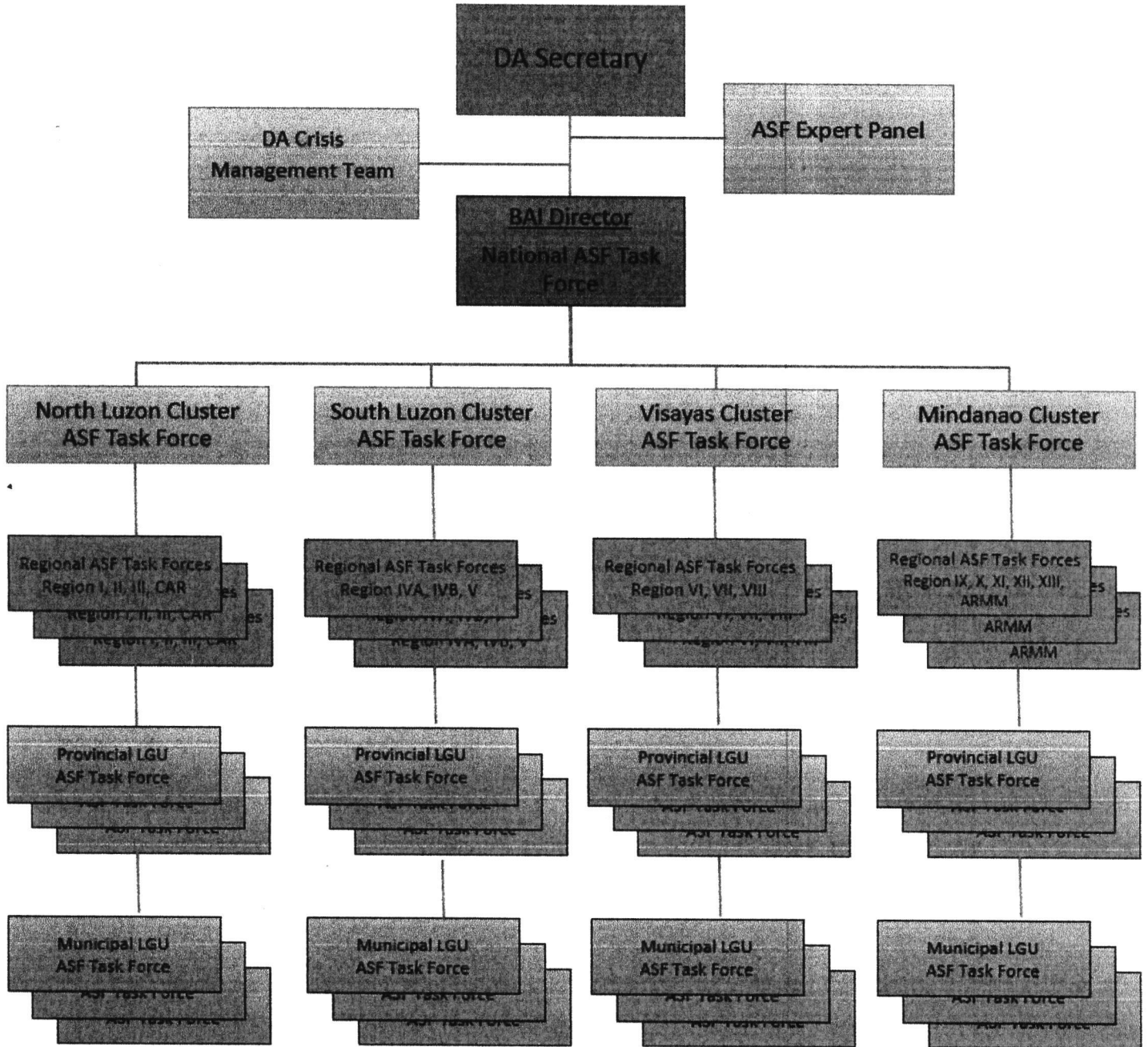
DEPARTMENT OF AGRICULTURE

in replying pls cite this code :
For Signature: S-12-20-0629
Received . 21/12/2020 01:35 PM



ANNEX A

ORGANOGRAM OF THE INTENSIFIED AFRICAN SWINE FEVER DISEASE RESPONSE



ANNEX B

RECOMMENDED STRUCTURE FOR PROVINCIAL ASF TASK FORCE

